

Closing Plenary

Culturally Responsive Evaluation and
Assessment-Hawai'i (CREA) 301:
Hawai'i-Pacific Evaluation Association
2020 Conference, Honolulu, HI

Aloha
as a
Disruptive and
Humbling Force



CREA-HI Presenters

- Herb Lee, Pacific American Foundation
- Kathy Tibbetts, Lili'uokalani Trust
- Pālama Lee, Lili'uokalani Trust
- Peter Mataira, Hawai'i Pacific University
- Paula Morelli, Consuelo Foundation

Evaluation with Aloha available at
<https://onipaa.org/pages/culturally-sustaining-r-e-practice>





Kathy's Mo'okūauhau





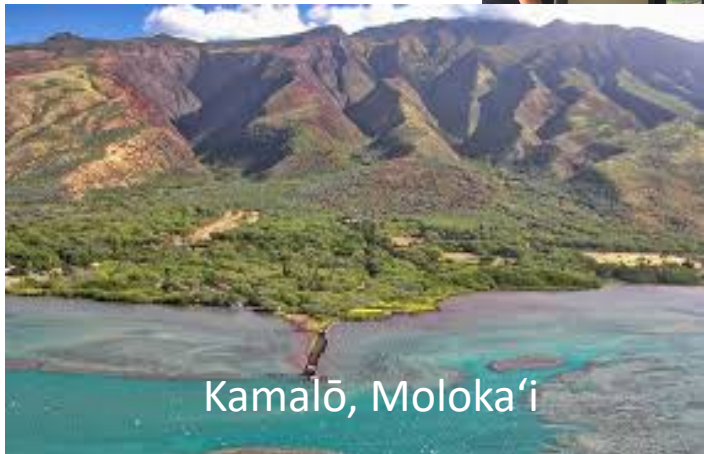
Me, mommy, and tita



Kalama 'Ohana



Lilo Aiga



Kamalō, Moloka'i



Pālama and Kanahele



My partner and foster son
(to be adopted soon!)



Lee 'Ohana

Pālama's Mo'okūauhau

Reflections by Puanani Burgess



Vivian Ainoa



Pilahi Paki



Puanani Burgess



Verlie Ann Malina Wright



Lois Ellen Datta



Lori Higa



Pearl Ulu Garmon



Calvin Hoe

Evaluation with Aloha as Humbling

- Living in a space of respectful relationships: honoring the mana, histories, talents, and resources of the community
- Ha'aha'a – entering a space with emptiness
 - Unpacking colonial assumptions
 - Recognize our biases
 - Open to new understandings, perspectives, and 'ike
 - Expressions of humility and gratitude (e.g., food and other cultural offerings)



Evaluation with Aloha as Disruption

Culturally responsive and
sustaining

- Honor ea
- Kuleana highest to intended beneficiaries and communities
- Support/advance the perpetuation of Hawaiian culture, ways of being, ways of knowing
- Be pili with key stakeholders



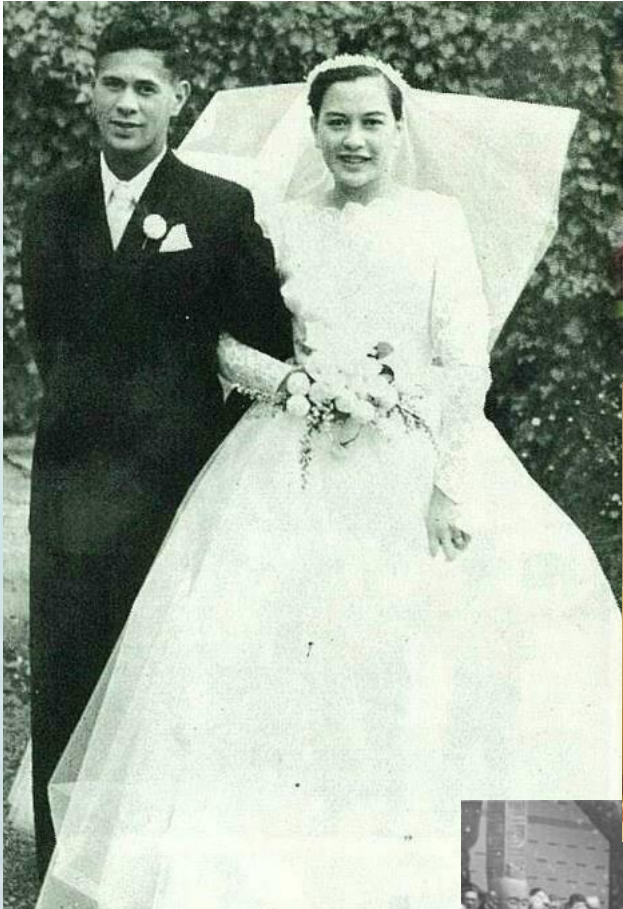
A Journey of Re-Discovery: STRENGTHS
ENHANCING EVALUATION RESEARCH
(SEER)

Decolonizing & Indigenizing Community
Research

Peter Matairea & Paula T. Morelli

Prologue and Positionality

Lenses, contexts, values





Decolonization & Indigenization

- What does decolonization mean and look like?
- “Everyday acts of resurgence” which regenerate Indigenous knowledges, epistemologies, and ways of life.” (Corntassel, 2012)
- Indigenous knowledges are always adapting, creating and moving forward. There’s no stopping, no finality. Decolonization is a “tangible unknown” (Sium, Desai & Ritskes, 2012).

Evaluation Research Journey

- 2008: Consuelo Foundation: Nā Kamalei (2 years)
- 2010: Nā Kamalei, Administration for Native Americans (3 years)
- 2013: Liliu‘okalani Trust (1.5 years)

Strengths Enhancing Evaluation Partnerships 2008-2010

Nā Kamalei, Punalu`u



Ho`oulu 'Āina, Kalihi Valley



Na Kamalei: Ko`olauloa Early Education Program

Punalu`u, Hawai'i
(Administration for
Native Americans 2010-
2013)



Keahuolū Ahupua`a

Site of Papawai Nurturing
`Ohana Camp
(Lili`uokalani Trust, 2013)



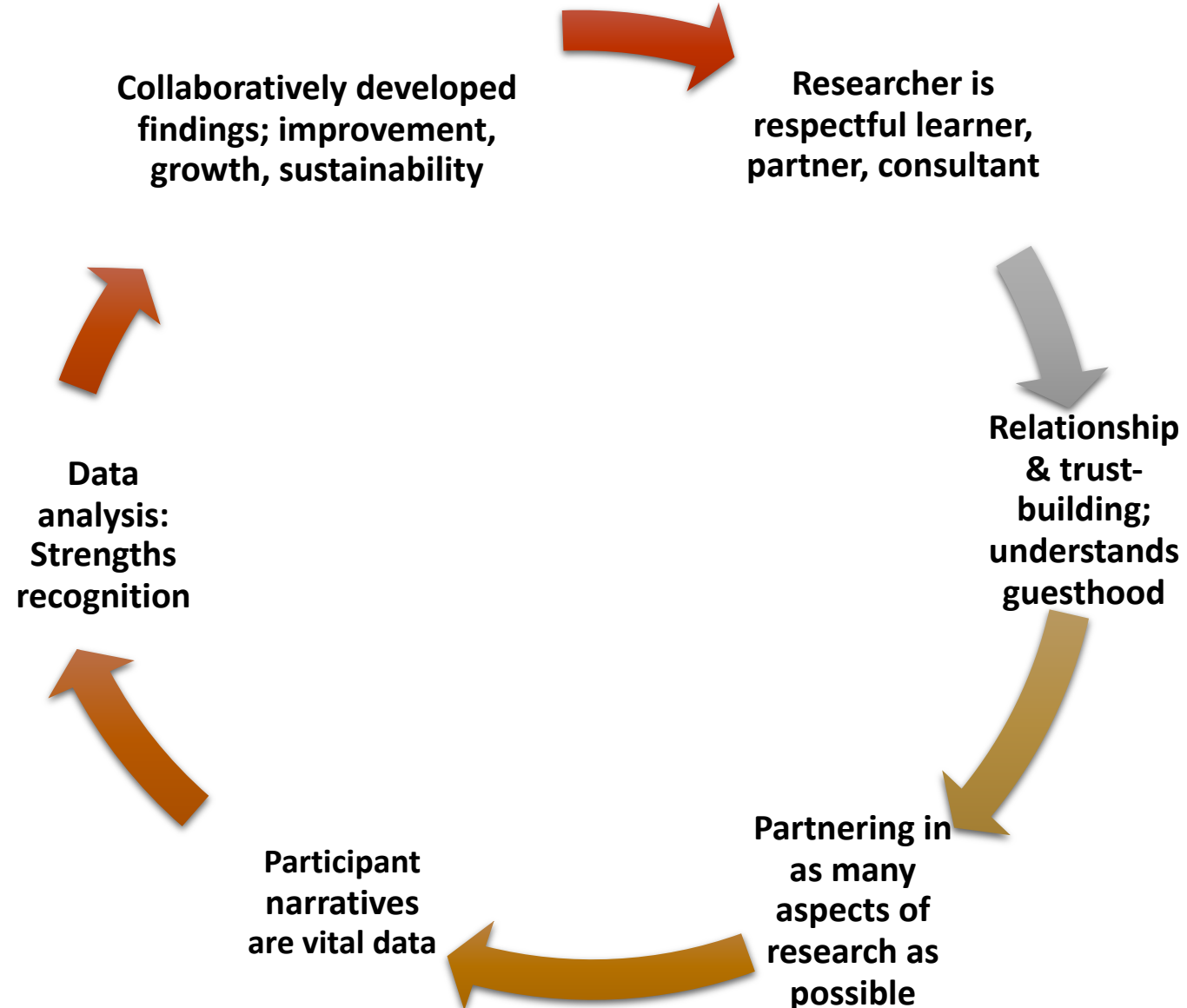


What we learned and continue to...



- We're guests, asking to be invited to enter their space.
- Our interactions were acts of:
 - Trust-building, demonstrating deep respectfulness, not needing to be an expert, self-recognition of assumptions
 - Open and willing to learn what they offered to teach us,
 - Humble and trusting enough to be scolded or corrected.
- What questions do they want research to answer? How do they want to use the data?
- How did they want to tell their stories (Narratives, mixed methods, etc.), collaboratively examine and analyze data, and report (Written, videography, innovative methods.)
- Value of long-term relationship beyond the research timeline

Strengths Enhancing Evaluation Research (SEER): Partnership, Relationship-Building Practices



SEER is not new...

- There's a genealogy to evaluation work, many generations before us sought to re-empower and give voice to the amazing work in communities and to continually develop evaluation processes.
- This COVID period is providing opportunities for everyone to understand the struggle that's been going on for generations.

Each of you will have a unique journey in evaluation research... ask yourself ...

- What is my prologue? How does it affect the way I view people, situations, and outcomes?
- How prepared am I to be uncomfortable outside of my own perspective?
- How am I respecting the community's boundaries?
- How am I addressing issues of power?
- How am I acknowledging Indigenous peoples' righteous indignation at ongoing injustices?





Concluding thoughts

<https://www.creahawaii.com/resources>

SEER Videos

- ❖ Strengths Enhancing Evaluation Research (SEER) – Partnerships with Ho`oulu Aina & Na Kamalei, in evaluation research 2008-2010 (a project funded by Consuelo Foundation)

<http://www.youtube.com/watch?v=GEubejt8oUg>

- ❖ Na Kamalei Early Education Program Evaluation 2010-2013

<http://www.youtube.com/watch?v=BSJTMKVwBGs>

- ❖ Queen Lili`uokalani Children's Center – Papawai Nurturing Ohana Camp evaluation 2013

References

- American Evaluation Association. (2011). *American Evaluation Association public statement on cultural competence in evaluation*. Retrieved from <https://www.eval.org/p/cm/ld/fid=92>
- Beamer, K. (2014). 'Ōiwi leadership and 'āina. In J. K. Osorio (Ed.), *I ulu i ka 'āina: Land*. Honolulu, HI: Hawaiʻinuiākea School of Hawaiian Knowledge: University of Hawaiʻi Press.
- Beamer, W.D. (1984). *Talking story with Nona Beamer: Stories of a Hawaiian family*. Honolulu, HI: Bess Press.
- Blaisdell, K., & Mokuau, N. (1991). Kanaka maoli: Indigenous Hawaiians. In N. Mokuau (Ed.), *Handbook of social services for Asian and Pacific Islanders*. pp:131–154. New York, NY: Greenwood Press.
- Burgess, P. (2013). Building the beloved community: A life practice. Hūlili: Multidisciplinary Research on Hawaiian Well-Being, 9. Ppp: 11-34. Retrieved from http://www.ksbe.edu/_assets/spi/hulili/hulili_vol_9/2_2013_Vol9_Burgess.pdf
- Chilisa, B. (2012). *Indigenous research methodologies*. Thousand Oaks, Calif.: SAGE Publications.
- Cidor, Jaime. "Storytelling as Indigenous Knowledge Transmission." Proceedings of the International Indigenous Development Research Conference, 2012. 26-31. <https://core.ac.uk/download/pdf/11050282.pdf>.

References

- Crabbe, K. M., Fox, K., & Coleman, H. K. (2017). Mana lāhui kānaka: Mai na kūpuna kahiko mai a hiki kēia wā (M. D. Enos, L. Watkins-Victorino, R. M. Keahioloalo, & N. M. Hind Eds.). Honolulu, HI: Office of Hawaiian Affairs.
- Cram, F., Tibbetts, K. A., & LaFrance, J. (2018). Editor's notes: A stepping-stone in Indigenous evaluation. *New Directions for Evaluation*, 2018(159). pp:7–16. <https://doi.org/10.1002/ev.20327>
- Fetterman, D. M., Rodríguez-Campos, L., & Zukoski, A. P. (2018). *Collaborative, participatory, and empowerment evaluation: Stakeholder involvement approaches*. New York: The Guilford Press.
- Greene, J. C. (2007). *Mixed methods in social inquiry* (1st ed.). San Francisco, CA: Jossey-Bass.
- Haertig, E. W., Pukui, M. K., & Lee, C. A. (1979). *Nana i ke kumu* (Vol. 2). Honolulu, HI: Hui Hanai.
- Harvey, G. (2003). Guesthood as an ethical decolonizing research method. *Numen*, 50. pp:125–146.
- Kahakalau, K. (2019). Utilizing mā'awe pono as a framework and methodology for research in the area of systems change benefiting the Native Hawaiian lāhui. In *'Imi na'auao: Hawaiian knowing and wellbeing* (pp. 23–32). Kapolei, HI: University of Hawai'i-West O'ahu: University of Hawai'i Press.
- Kame'eleihiwa, L. (1992). *Native land and foreign desires: Pehea lā e pono ai?* Honolulu, HI: Bishop Museum.

References

- Kawakami, A., Aton, K., Cram, F., Lai, M., & Porima, L. (2007). Improving the practice of evaluation through indigenous values and methods: Decolonizing evaluation practice—returning the gaze from Hawai‘i and Aotearoa. In P. Brandon & N. Smith (Eds.), *Fundamental issues in evaluation*. pp. 219–242. New York, NY: Guilford Press.
- Kovach, M. (2009). *Indigenous methodologies: characteristics, conversations and contexts*. Toronto, Canada: University of Toronto Press.
- Mataira, P. J, Morelli, P. T. and Yamashita, M. (2010). Strengths-Enhancing Research (SEER part I): Paths and Practices: Toward Relevant, Effective Program Development. Consuelo Foundation and Myron B. Thompson School of Social Work in association with Quazifilms Media Production. Honolulu, Hawai`i. <http://youtu.be/GEubejt8oUg>
- Maunakea, S. P. (2016). Arriving at an ‘āina aloha research framework: What is our kuleana as the next generation of ‘ōiwi scholars? In K. R. K. N. Oliveira & E. K. Wright (Eds.), *Kanaka ‘ōiwi methodologies: Mo‘olelo and metaphor* (pp. 142–159). Honolulu, HI: Hawai‘inuiākea School of Hawaiian Knowledge: University of Hawai‘i Press.
- Mertens, D. M. (2008). *Transformative research and evaluation*. New York, NY: Guilford Press.
- Meyer, M. (2003). *Ho‘oulu: Our time of becoming*. Honolulu, HI: ‘Ai Pohaku Press.

References

- Meyer, M. (2019). 'Auamo kuleana, ho'opono: 'Imi na'auao. In *'Imi na'auao: Hawaiian knowing and wellbeing* (pp. 17–22). Kapolei, HI: University of Hawai'i-West O'ahu: University of Hawai'i Press.
- Morelli, P., & Mataira, P. (2010). Indigenizing evaluation research: A long-awaited paradigm shift. *Journal of Indigenous Voices in Social Work*, 1(2), 1–12. Retrieved from http://scholarspace.manoa.hawaii.edu/bitstream/handle/10125/18773/v1i2_05morelli.pdf
- Oliveira, K. R. K. N., & Wright, E. K. (2016). *Kanaka 'ōiwi methodologies: Mo'olelo and metaphor*. Honolulu, HI: Hawai'inuiākea School of Hawaiian Knowledge: University of Hawai'i Press.
- Paglinawan, L.K., Paglinawan, R.L., Kauahi, D., Kanuha, V. K. (2020). *Nānā I Ke Kumu, Helu 'Ekolu*. Honolulu, HI: Lili'uokalani Trust.
- Paglinawan, R. and Paglinawan, L (2012). Living Hawaiian Rituals: Lua, Ho'oponopono, and Social Work. Hūlili: Multidisciplinary Research on Hawaiian Well-Being. Online journal series, Vol. 8. pp:11 – 28. Retrieved http://kamehamehapublishing.org/assets/publishing/hulili/Hulili_Vol8_2.pdf (Links to an external site.)
- Paki, P. (n.d.). What is the aloha spirit? Retrieved from <https://www.volcanogallery.com/alohaspirit.htm>
- Patton, M. Q. (2015). *Qualitative research & evaluation methods: Integrating theory and practice* (Fourth edition. ed.). Thousand Oaks, California: SAGE Publications, Inc.
- Pukui, M. K. (1983). *'Ōlelo no'eau: Hawaiian proverbs and poetical sayings*. Honolulu, HI: Bishop Museum

References

- Shim, P. and Thao, L. (2014). Mindfulness and the Aloha Response. *Journal of Indigenous Social Development*. Online journal series, Vol. 3, Issue 1. pp:1 – 11. Retrieved September 14, 2020, from <https://citeseerx.ist.psu.edu/viewdoc/download?doi=10.1.1.887.3404&rep=rep1&type=pdf>
- Smith, L. T. (2012). *Decolonizing methodologies: Research and Indigenous peoples* (2nd E.). London: Zed Books.
- Stewart-Harawira, M. (2005). Cultural studies, indigenous knowledge and pedagogies of hope. *Policy Futures in Education*, 3(2). pp:153–163.
- Trochim, W. M. K., & Donnelly, J. P. (2008). *Research methods knowledge base* (3rd ed.). Mason, Ohio: Atomic Dog/Cengage Learning.
- Uemoto, M. H. T. (2016). *Indigenous evaluation frameworks: A systematic literature review*. Paper presented at the Hawai'i-Pacific Evaluation Association, Kāne'ōhe, HI.
- University of Hawai'i-West O'ahu. (2019). *'Imi na'auao: Hawaiian knowing and wellbeing*. Kapolei, HI: University of Hawai'i-West O'ahu: University of Hawai'i Press.
- Wilson, S. (2008). *Research is ceremony: Indigenous research methods*. Black Point, N.S.: Fernwood Publishing.